

PERMAHAUS 1 A R R I V A L

Eric Parks
ecological architect
sustainable building consultant



THE APPROACH

1. Clear ordering of spaces to accommodate arrival - car parking, entrance emphasised by pergola structure and car shelter for easy transition on arrival
2. Planting and shelters define outdoor rooms and control views through to lake beyond
3. External walls and timber frame structures create strong definition showing where to go but planting used to soften and create the public face of the house to the communal areas
4. Public face of the site allows restricted glimpses through to the private realm beyond
5. Pergola provides frame for climbing fruit with herb garden at front to encourage social interaction



Woodland edge

A wilder space planted with native broadleaf species: This creates habitat, shelter belt for the house, a visual screen and seclusion for the boat house. Wildlife further encouraged through installation of bat boxes and hibernacula for amphibians and riparian mammals such as water vole *Arvicola terrestris* amphibius.

Species mix: *Alnus glutinosa*, *Betula pendula*, *Salix pentandra*, *Sambucus nigra* & *Sorbus aucuparia edulis*, . Alder & birch are quick-growing riparian specialists selected for quick effect, waterside erosion control and in the case of alder, nitrogen fixing to promote soil fertility, reducing maintenance effort and fertilizer requirements.

Sambucus nigra & *Sorbus aucuparia edulis* provide abundant bird food, or could be foraged for home made country wines.

The Boathouse: Getaway & Gateway

The secluded boat house is shielded from the main house by the native trees, and provides a different quality of rustic simplicity, allowing the occupants to really get away from it all. It contains a small wood-burning stove and mezzanine platform for occasional additional guests, teenagers in need of privacy, or simply bulk storage. The boat house may optionally include a wood-fired sauna. Housing boats, and incorporating a jetty, the boat house also becomes the gateway to water-borne transport around the network of channels that criss-cross the estate. A bench provides a place for quiet contemplation, or unobtrusive vantage point from which to watch children playing in the water. The boat house is constructed from locally-sourced timber and thatch, creating local employment & supporting traditional skills.

THE LANDSCAPE

Overall concept

The garden serves as an edge that integrates the house & landscape in a gradual continuum from luxurious, controlled indoor spaces to wild natural space. It connects the two visually, functionally and through various energy transactions (such as the production of food, use of local firewood). The potential for the building fabric to dominate as the defining design element is tempered by the interconnection of interior and exterior Spaces. This is achieved through the use of transitional spaces, outdoor rooms, views into the garden with its wild spaces, and the conscious invitation to wildlife to share the outdoor spaces. This creates opportunities for experiences that transcend the boundary of the building envelope, such as birdwatching from the house. Deciduous trees to the south provide shelter and some shade to the house in the summer and admit the sun in the winter.

Numerous fruit trees and bushes in the garden support wildlife while allowing residents to enjoy the abundance of the garden.

The estate coppice provides fuel for a wood-burning stove in the boat house and charcoal for barbecues, integrating the house into its locality, providing carbon neutral fuel, providing local employment opportunities for coppice workers, enhancing the habitat value of the coppice, and offering unique experiences for residents through educational activities such as coppice management, green wood working crafts, charcoal burning etc. "Charcoal burn, wine & pizza" nights run by the estate coppice manager could form a unique activity for residents who are interested in land-based activities.

Patio

A place for barbecues, outdoor dining and sunbathing in the summer, with a fire-pit for use on cooler nights and in winter.

Pergola walk

A shaded space to look onto the sunny garden, to approach the orchard, and to grow vine fruit up.

Orchard/forest garden

Numerous fruit trees around the plot enable residents to use the fruit or leave it to attract wildlife. Fruit varieties are selected for low maintenance, reliability and early cropping to coincide with peak holiday season: Plum 'Herman'; Cherry 'Celeste'; Pear 'Beth'; Apple 'Worcester Pearmain' (other apple varieties selected to provide a long harvesting season).

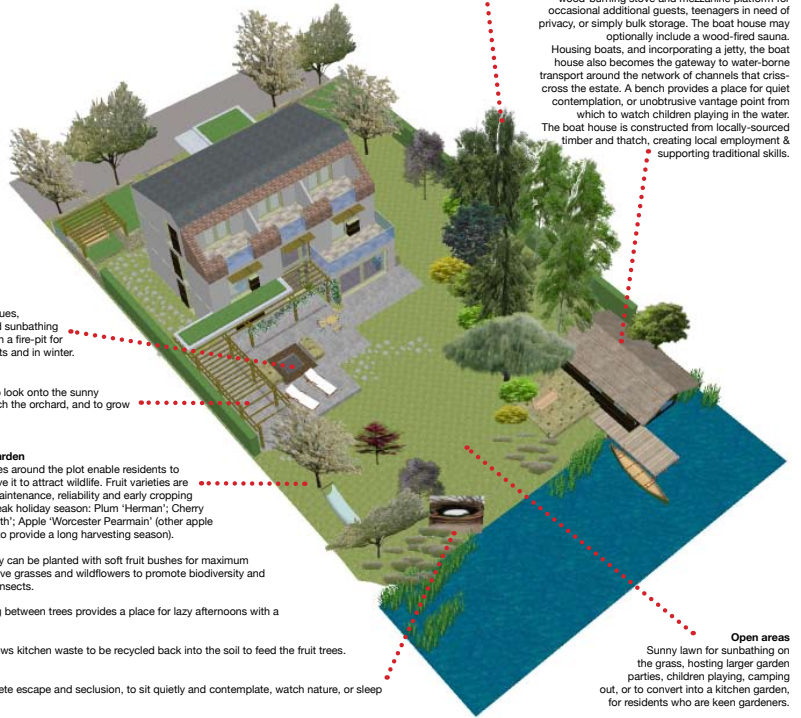
Orchard understorey can be planted with soft fruit bushes for maximum productivity or native grasses and wildflowers to promote biodiversity and attract pollinating insects.

A hammock strung between trees provides a place for lazy afternoons with a favourite book.

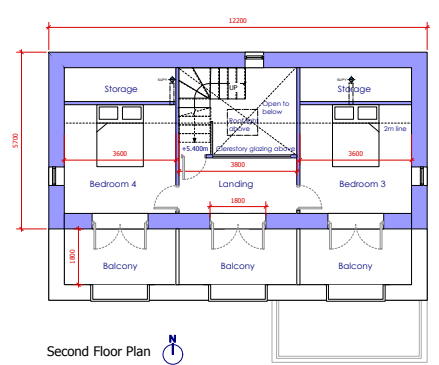
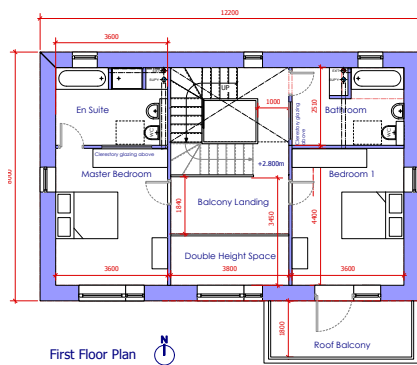
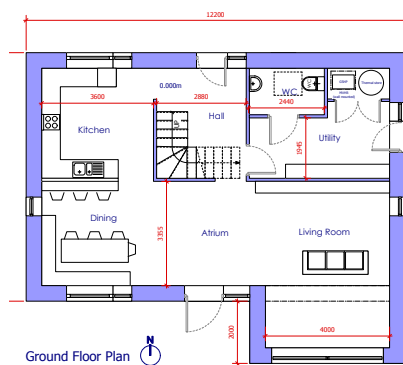
A compost bin allows kitchen waste to be recycled back into the soil to feed the fruit trees.

Bird Hide/Nest

A space for complete escape and seclusion, to sit quietly and contemplate, watch nature, or sleep outdoors.



THE HOUSE - plans



Once we'd entered the site we knew we'd come to a special place. It really felt like getting away to a world of new possibilities to explore the natural world, the beauty of the surroundings and to play. Just what was required.

It also felt like a community. One where we were able to be together or enjoy taking things at our own pace and retreat into our own 'homestead' if we wanted to.

The whole arrival felt like we had taken off urban blinkers and restored that feeling of adventure with new stories about to unfold. From parking the car to moving our things in felt like we were moving through a series of special places each giving us another aspect of being outdoors, with the excitement of a rich natural habitat and the wilderness just beyond. The house feels like our perfect cosy, spacious



and warm woodland retreat.

Parts of the garden look like an extension of the house and it feels like being close to nature. The herb garden is going to be really useful as well as the great smells from the plants. Looking forward to making the most of them in the kitchen. The finishes outside and inside the house are warm and natural. They fit in with the surroundings and giving us that sense of a healthy indoor atmosphere with the benefit of the physical beauty displayed to its full.

Looking at the log book, the house pretty much takes care of itself and us- its really interesting to find out how it works. The smart control for electric is very 'clever'. Normally I wouldn't think much about turning lights off and all that but last night I turned off the lights and looked at the amazing night sky.



OUR FIRST STAY at THE PERMAHAUS - DAY 1